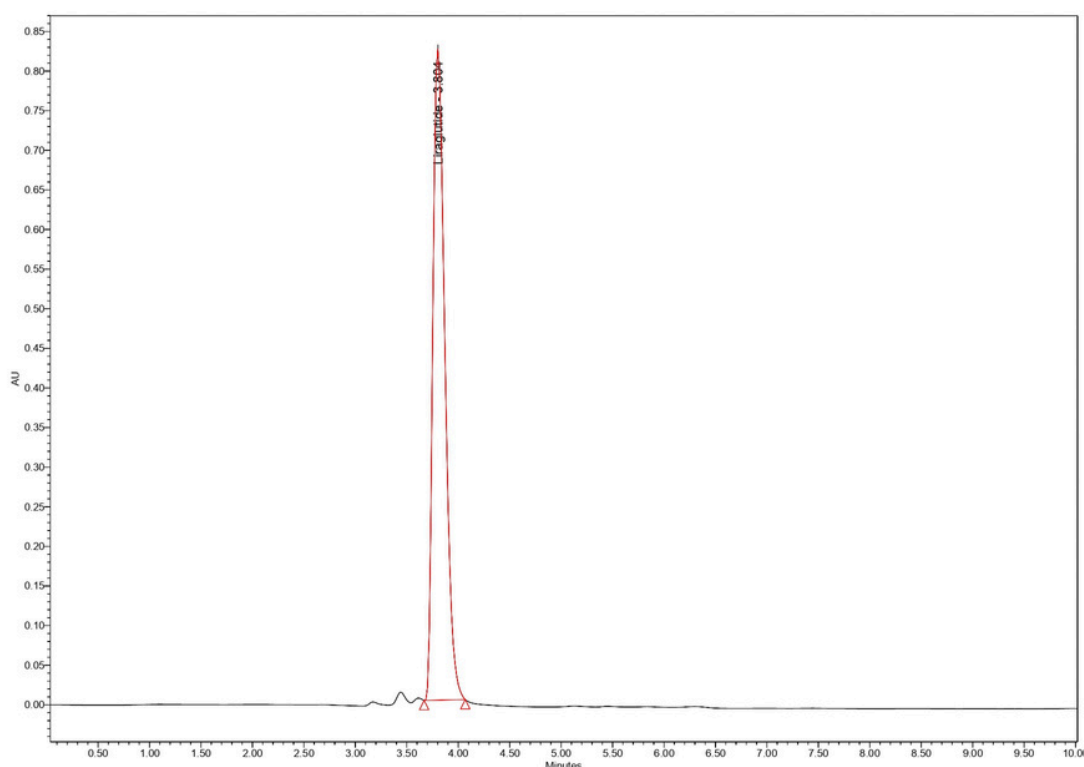


HPLC Columns

Liraglutide

RSolv[®] Capella C18, 5 μ m, 250 X 4.6 mm



Test Condition

Column: RSolv[®] Capella C18, 5 μ m, 250 X 4.6 mm

Part No.: RS1-3B050-25046

Flow Rate: 1.0 mL/min

Injection volume: 20 μ l

Detection: PDA 280 nm

Mobile Phase: Phosphate buffer pH 4.0: ACN (pH 4.0) (30:70% v/v)

Column Temperature: 30 $^{\circ}$ C

Sample Temperature: Ambient

Discussion

The isocratic mobile phase was Phosphate buffer pH 4.0: ACN (pH 4.0) (30:70% v/v) at a flow rate of 1.0 mL/min, and injection run time is 10 minutes. Analyte determination was performed using a PDA detector set at 280 nm. Sample was prepared with methanol and the volume injected was 20 μ l.

The chromatographic analysis detected a significant peak at 3.804 minutes, representing Liraglutide with a tailing factor of 1.38, indicating a symmetrical peak. Theoretical plates for Liraglutide were calculated at 4944, indicating good chromatographic efficiency.

For more information, Contact us at