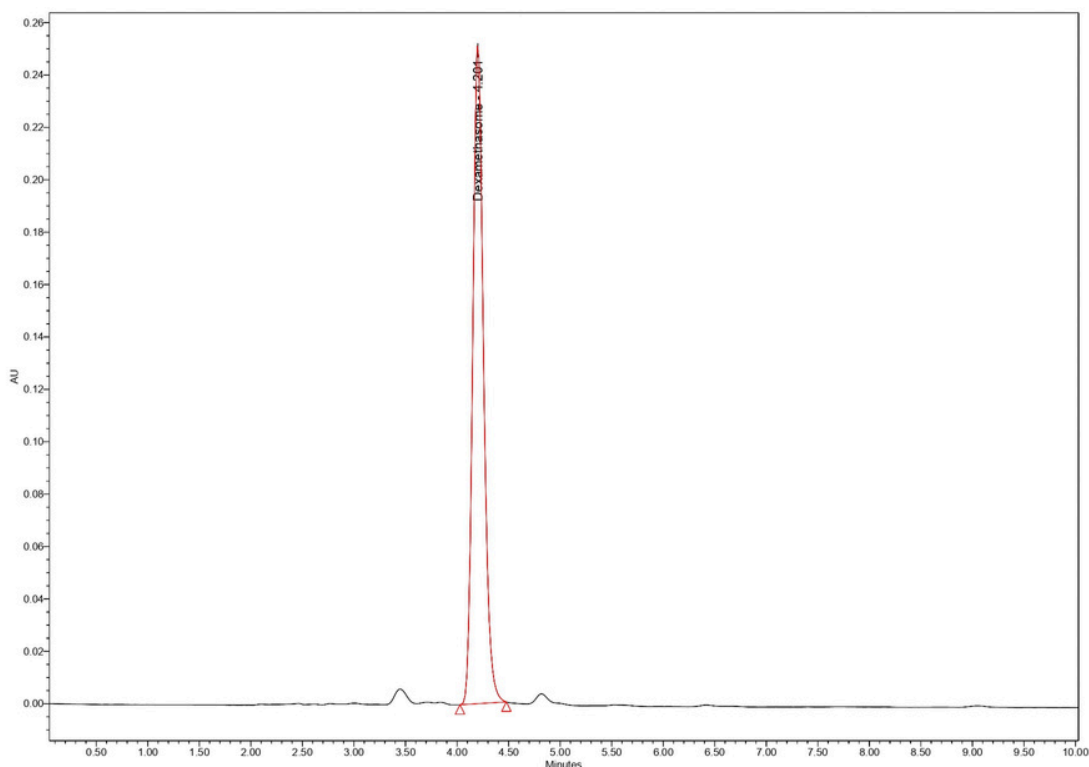


HPLC Columns

Dexamethasone

RSolv[®] Capella C18, 5 μ m, 250 X 4 mm



Test Condition

Column: RSolv[®] Capella C18, 5 μ m, 250 X 4 mm

Part No.: RS1-3B050-2506

Flow Rate: 1.0 mL/min

Injection volume: 20 μ l

Detection: PDA 254 nm

Mobile Phase: Methanol : Water (65:35; v/v)

Column Temperature: 30°C

Sample Temperature: Ambient

Discussion

The isocratic mobile phase was methanol : water (65:35; v/v) at a flow rate of 1.0 mL/min, and injection run time is 10 minutes. Analyte determination was performed using a PDA detector set at 254 nm. Sample was prepared with methanol and the volume injected was 20 μ l.

The chromatographic analysis detected a significant peak at 4.201 minutes, representing Dexamethasone with a tailing factor of 1.25, indicating a symmetrical peak. Theoretical plates for Dexamethasone were calculated at 8059, indicating good chromatographic efficiency.

For more information, Contact us at